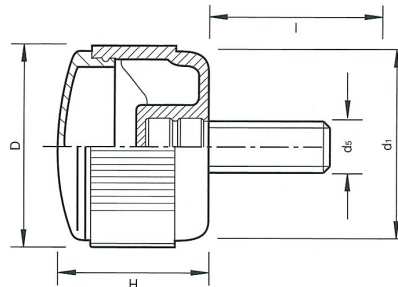


1196 - Contact Thermoplastic Knob - Male

Black Thermoplastic Base with Cap • Cap Colours – Black, Orange, Red, Blue, Yellow, and Silver

- Treated Threaded Steel Stud

Part Number	D	H	d1	d5	l
11-KPCX40S6-15	40	28	37	M6	15
11-KPCX40S6-30	40	28	37	M6	30
11-KPCX40S6-40	40	28	37	M6	40
11-KPCX40S8-15	40	28	37	M8	15
11-KPCX40S8-30	40	28	37	M8	30
11-KPCX40S8-47	40	28	37	M8	47
11-KPCX40S10-20	40	28	37	M10	20
11-KPCX40S10-30	40	28	37	M10	30
11-KPCX40S10-40	40	28	37	M10	40



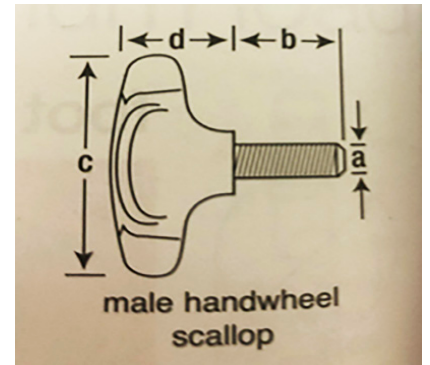
11-KPCX see below X =
 B – Black cap
 O – Orange
 R – Red
 BU – Blue
 Y – Yellow
 S – Silver

Male Scallop Edge Handwheels

Treated Steel stud

- PA : Black Reinforced Polyamide

Part Number	A Thread	B Thread Length	C	D
11-M600RBLK-15F	M6	15	44	14
11-M600RBLK-30F	M6	30	44	14
11-M800RBLK-15F	M8	15	40	14
11-M800RBLK-50F	M8	50	40	27
11-M100RBLK-25F	M10	25	50	35
11-M120RBLK-40F	M12	40	80	52
11-M794RBLK-19F	5/16	19	50.8	27
11-M952RBLK-19F	3/8	19	50.8	27



Female Scallop Edge Handwheels

Mild steel z.p. thread

- PA : Black Reinforced Polyamide

Part Number	A Thread	C Wheel Diam.	D Wheel Thickness mm
11-M635RBLKF	1/4	40	27
11-M600RBLKF	M6	40	27
11-M794RBLKF	5/16	40	27
11-M800RBLKF	M8	40	27
11-M952RBLKF	3/8	50	35
11-M100RBLKF	M10	50	35
11-M120RBLKF	M12	80	52

