

Button Fix Accessories

Fix-pad For Type 1 Bonded

Self-adhesive fix-pads for the type 1 bonded are ideal for light duty applications where speed of assembly is important.

Part Number	Description
04-171017-2	Fix-pad for Type 1 Bonded



Safety Cord Accessory

The Safety Cord should be used in all applications of Type 2 Button-fix where extra safety is required.

Part Number	Description
04-171002-4	Safety Cord Accessory

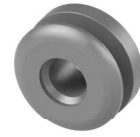


Extra Buttons

Part Number	Description
04-171002-1	Screw for CSK fix
04-171002-2	Screw for Euro fix



04-171002-1



04-171002-2